


Legend

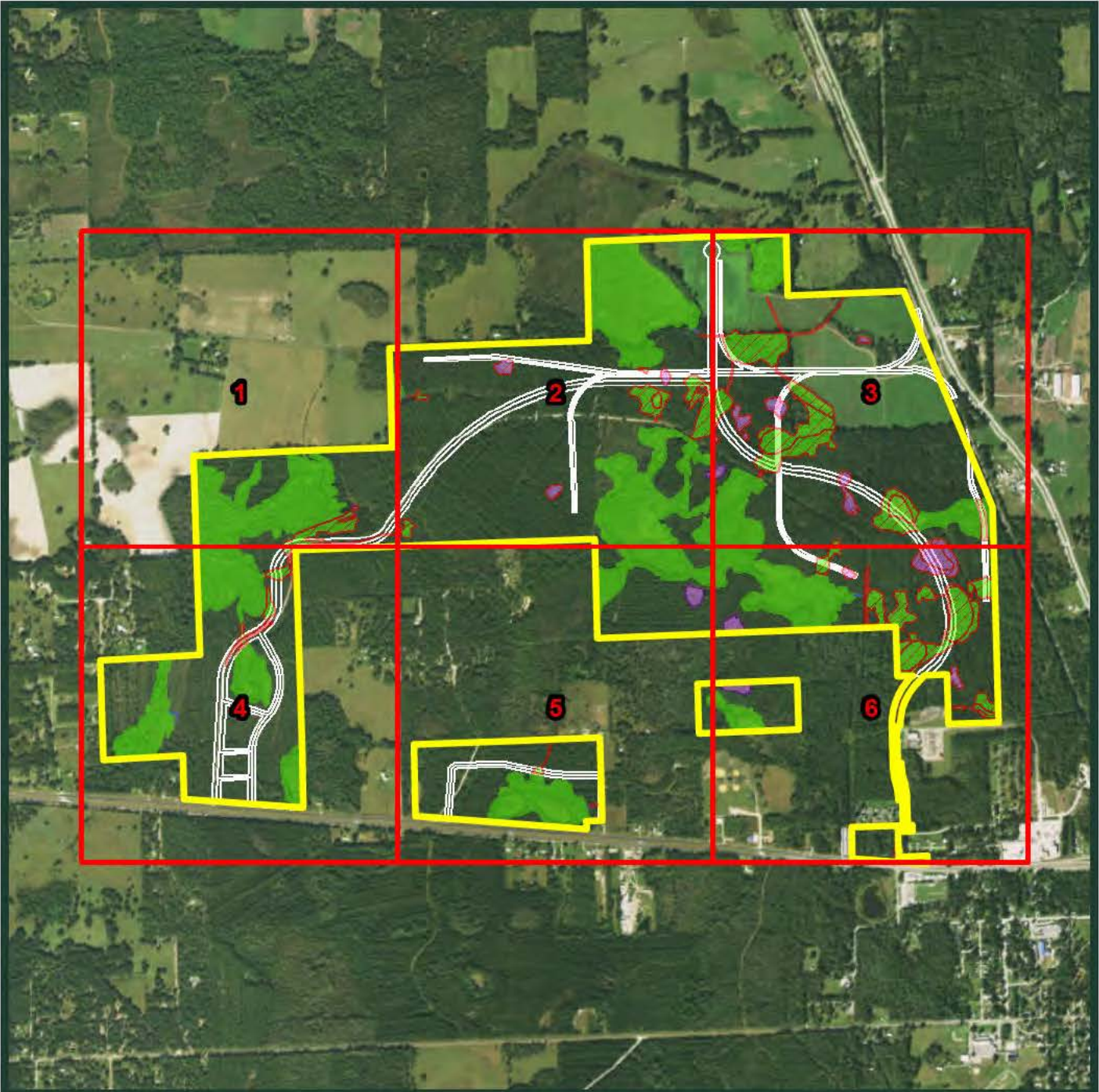
 Project Boundary (29°36'18.06"N, 82°6'35.24"W)



Source: Surveyed boundary provided by CHW- NC 5/17/16.

FIGURE 1.0-1 LOCATION OF EA-HAWTHORNE EMPLOYMENT CENTER PROJECT SITE, (SECTIONS 15, 16, 20, 21, 22, 27, 28, 29, TOWNSHIP 10S., RANGE 22E.), CITY OF HAWTHORNE, FLORIDA

BDA BREEDLOVE, DENNIS & ASSOCIATES, INC.
 Environmental Consultants
 330 W. Canton Ave., Winter Park, FL 32789 • 407-677-1882



Legend

- Project Boundary (1,067.5 ac)
- Jurisdictional Surface Water (0.2 ac)
- Jurisdictional Wetlands (218.2 ac)
- Non-Jurisdictional Wetlands (4.0 ac)
- Jurisdictional Surface Water Impacts (3.2 ac)
- Jurisdictional Wetland Impacts (66.9 ac)
- Non-Jurisdictional Wetland Impacts (12.8 ac)

Source: Surveyed boundary and wetlands provided by CHW- NC 5/17/16. Wetlands reviewed and approved by SJRWMD under FWD 001-144680-1 and 8/26/16 site review. ArcGIS Online World Imagery, © ESRI, 11/12/2015.

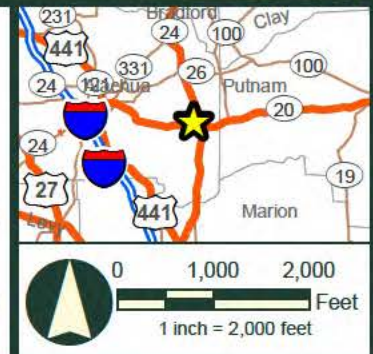
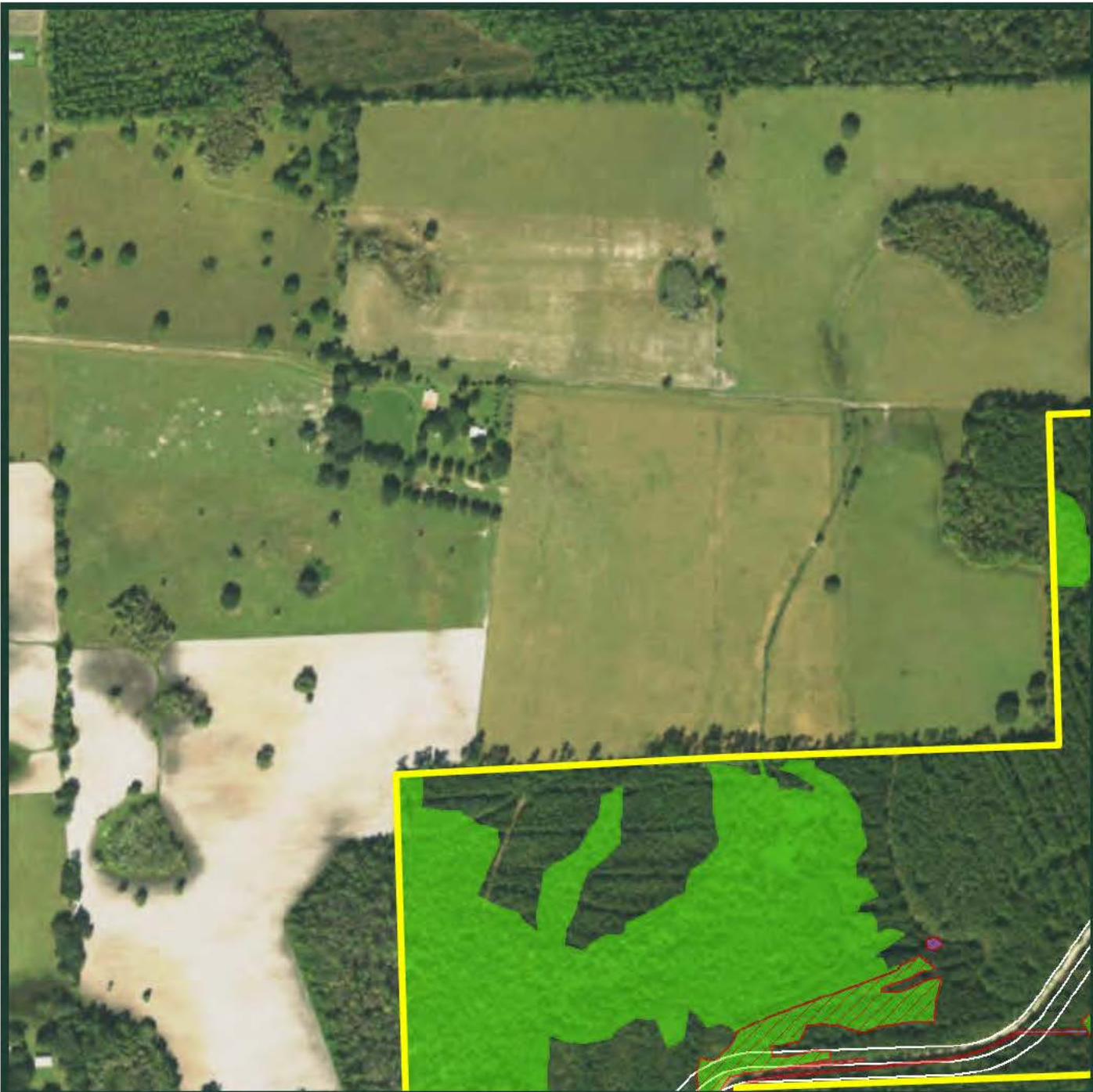


FIGURE 4.4-1. PROPOSED DEVELOPMENT PLAN AND DEPARTMENT OF THE ARMY, CORPS OF ENGINEERS WETLAND IMPACTS FOR THE EA-HAWTHORNE EMPLOYMENT CENTER, CITY OF HAWTHORNE, FLORIDA

BDA BREEDLOVE, DENNIS & ASSOCIATES, INC.
 Environmental Consultants
 330 W. Canton Ave., Winter Park, FL 32789 • 407-677-1882



Legend

See Detail 4

- Project Boundary
- Jurisdictional Surface Water
- Jurisdictional Wetlands
- Non-Jurisdictional Wetlands
- Jurisdictional Surface Water Impacts
- Jurisdictional Wetland Impacts
- Non-Jurisdictional Wetland Impacts

Source: Surveyed boundary and wetlands provided by CHW- NC 5/17/16. Wetlands reviewed and approved by SJRWMD under FWD 001-144680-1 and 8/26/16 site review. ArcGIS Online World Imagery, © ESRI, 11/12/2015.

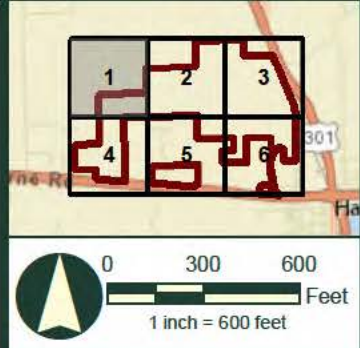


FIGURE 4.4-1. (DETAIL 1) PROPOSED DEVELOPMENT PLAN AND DEPARTMENT OF THE ARMY, CORPS OF ENGINEERS WETLAND IMPACTS FOR THE EA-HAWTHORNE EMPLOYMENT CENTER, CITY OF HAWTHORNE, FLORIDA

BDA BREEDLOVE, DENNIS & ASSOCIATES, INC.
 Environmental Consultants
 330 W. Canton Ave., Winter Park, FL 32789 • 407-677-1882

See Detail 1

See Detail 3



Legend

See Detail 5

- Project Boundary
- Jurisdictional Surface Water
- Jurisdictional Wetlands
- Non-Jurisdictional Wetlands
- Jurisdictional Surface Water Impacts
- Jurisdictional Wetland Impacts
- Non-Jurisdictional Wetland Impacts

Source: Surveyed boundary and wetlands provided by CHW- NC 5/17/16. Wetlands reviewed and approved by SJRWMD under FWD 001-144680-1 and 8/26/16 site review. ArcGIS Online World Imagery, © ESRI, 11/12/2015.

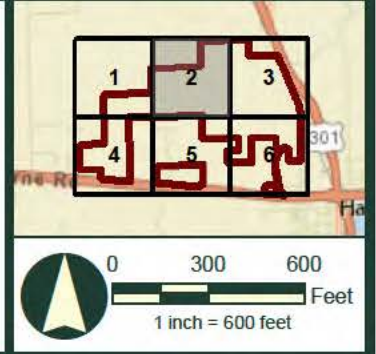
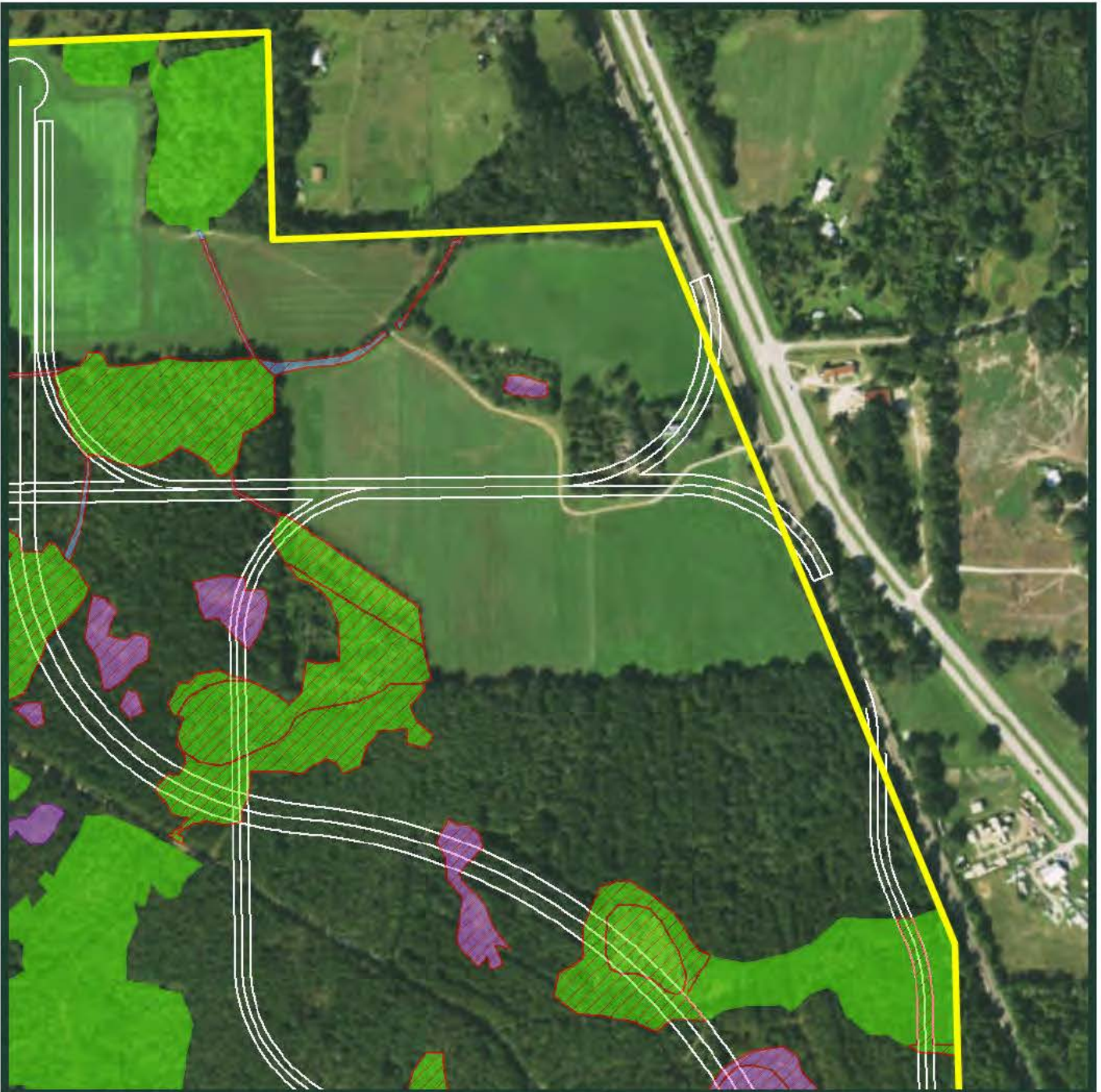


FIGURE 4.4-1. (DETAIL 2) PROPOSED DEVELOPMENT PLAN AND DEPARTMENT OF THE ARMY, CORPS OF ENGINEERS WETLAND IMPACTS FOR THE EA-HAWTHORNE EMPLOYMENT CENTER, CITY OF HAWTHORNE, FLORIDA

BDA BREEDLOVE, DENNIS & ASSOCIATES, INC.
 Environmental Consultants
 330 W. Canton Ave., Winter Park, FL 32789 • 407-677-1882

See Detail 2



See Detail 6

Legend

- Project Boundary
- Jurisdictional Surface Water
- Jurisdictional Wetlands
- Non-Jurisdictional Wetlands
- Jurisdictional Surface Water Impacts
- Jurisdictional Wetland Impacts
- Non-Jurisdictional Wetland Impacts

Source: Surveyed boundary and wetlands provided by CHW- NC 5/17/16. Wetlands reviewed and approved by SJRWMD under FWD 001-144680-1 and 8/26/16 site review. ArcGIS Online World Imagery, © ESRI, 11/12/2015.

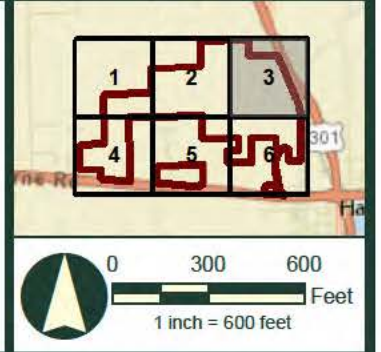
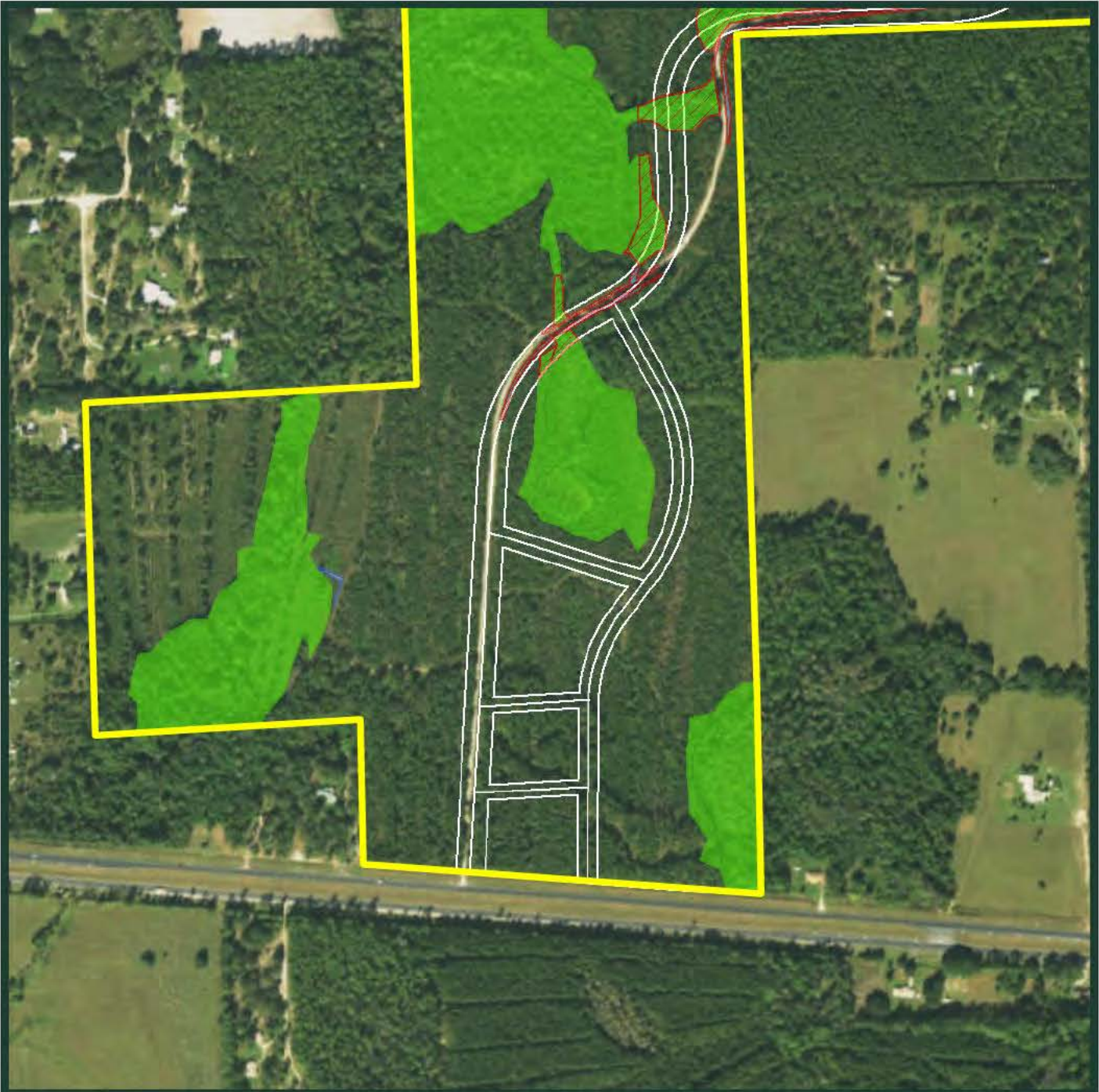


FIGURE 4.4-1. (DETAIL 3) PROPOSED DEVELOPMENT PLAN AND DEPARTMENT OF THE ARMY, CORPS OF ENGINEERS WETLAND IMPACTS FOR THE EA-HAWTHORNE EMPLOYMENT CENTER, CITY OF HAWTHORNE, FLORIDA

BDA BREEDLOVE, DENNIS & ASSOCIATES, INC.
 Environmental Consultants
 330 W. Canton Ave., Winter Park, FL 32789 • 407-677-1882

See Detail 1



See Detail 5

Legend

- Project Boundary
- Jurisdictional Surface Water
- Jurisdictional Wetlands
- Non-Jurisdictional Wetlands
- Jurisdictional Surface Water Impacts
- Jurisdictional Wetland Impacts
- Non-Jurisdictional Wetland Impacts

Source: Surveyed boundary and wetlands provided by CHW- NC 5/17/16. Wetlands reviewed and approved by SJRWMD under FWD 001-144680-1 and 8/26/16 site review. ArcGIS Online World Imagery, © ESRI, 11/12/2015.

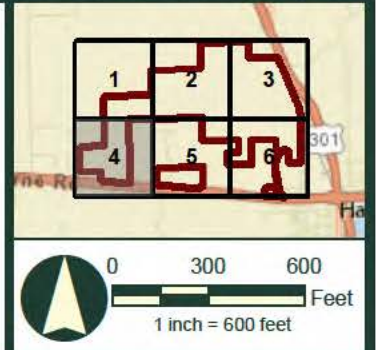


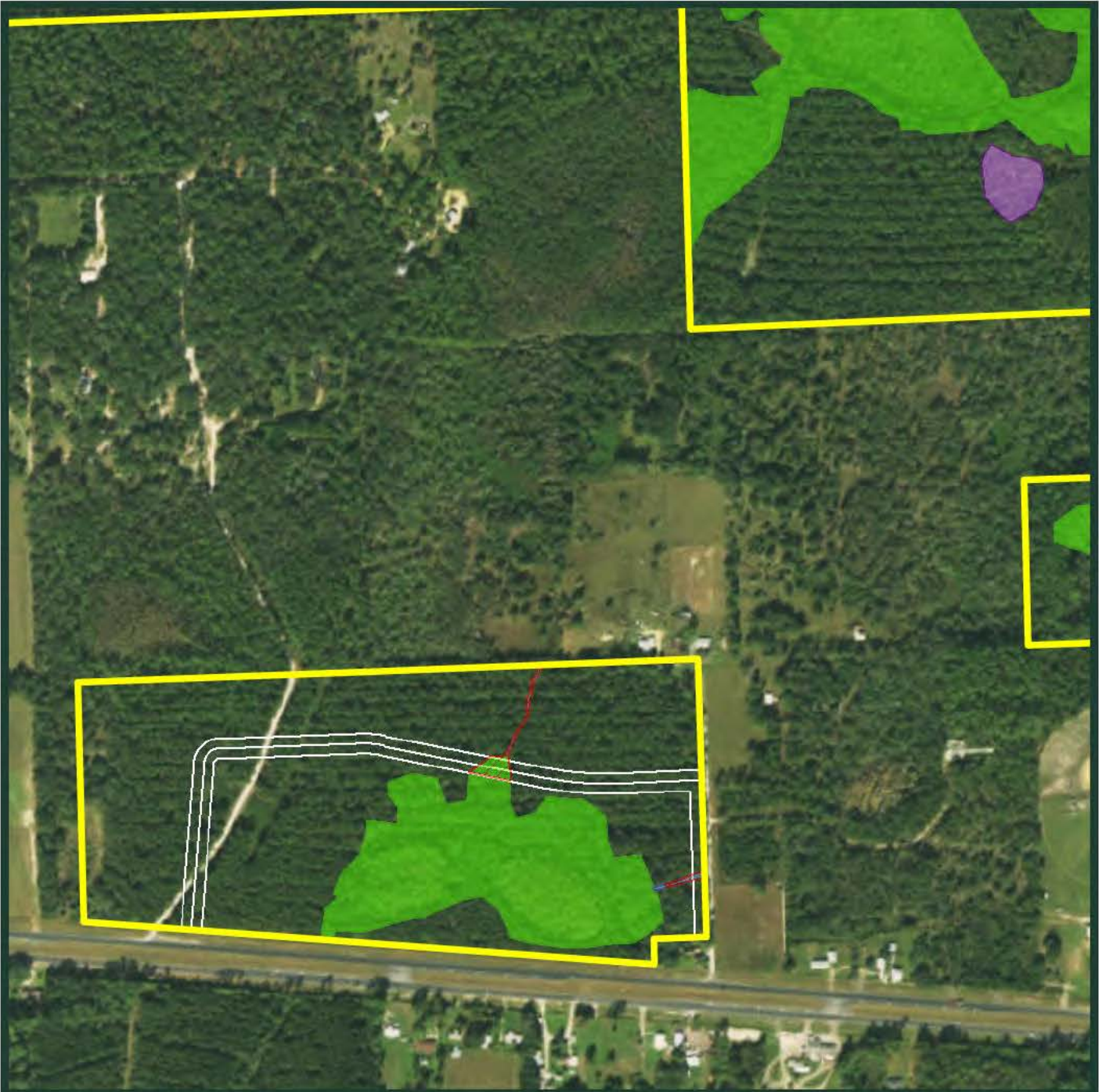
FIGURE 4.4-1. (DETAIL 4) PROPOSED DEVELOPMENT PLAN AND DEPARTMENT OF THE ARMY, CORPS OF ENGINEERS WETLAND IMPACTS FOR THE EA-HAWTHORNE EMPLOYMENT CENTER, CITY OF HAWTHORNE, FLORIDA

BDA BREEDLOVE, DENNIS & ASSOCIATES, INC.
 Environmental Consultants
 330 W. Canton Ave., Winter Park, FL 32789 • 407-677-1882

See Detail 2

See Detail 4

See Detail 6



Legend

- Project Boundary
- Jurisdictional Surface Water
- Jurisdictional Wetlands
- Non-Jurisdictional Wetlands
- Jurisdictional Surface Water Impacts
- Jurisdictional Wetland Impacts
- Non-Jurisdictional Wetland Impacts

Source: Surveyed boundary and wetlands provided by CHW- NC 5/17/16. Wetlands reviewed and approved by SJRWMD under FWD 001-144680-1 and 8/26/16 site review. ArcGIS Online World Imagery, © ESRI, 11/12/2015.

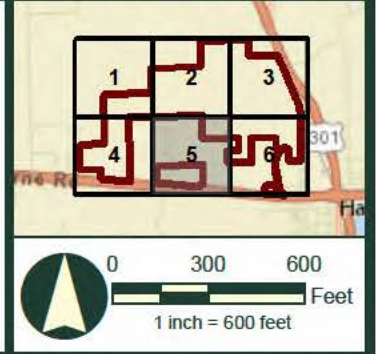
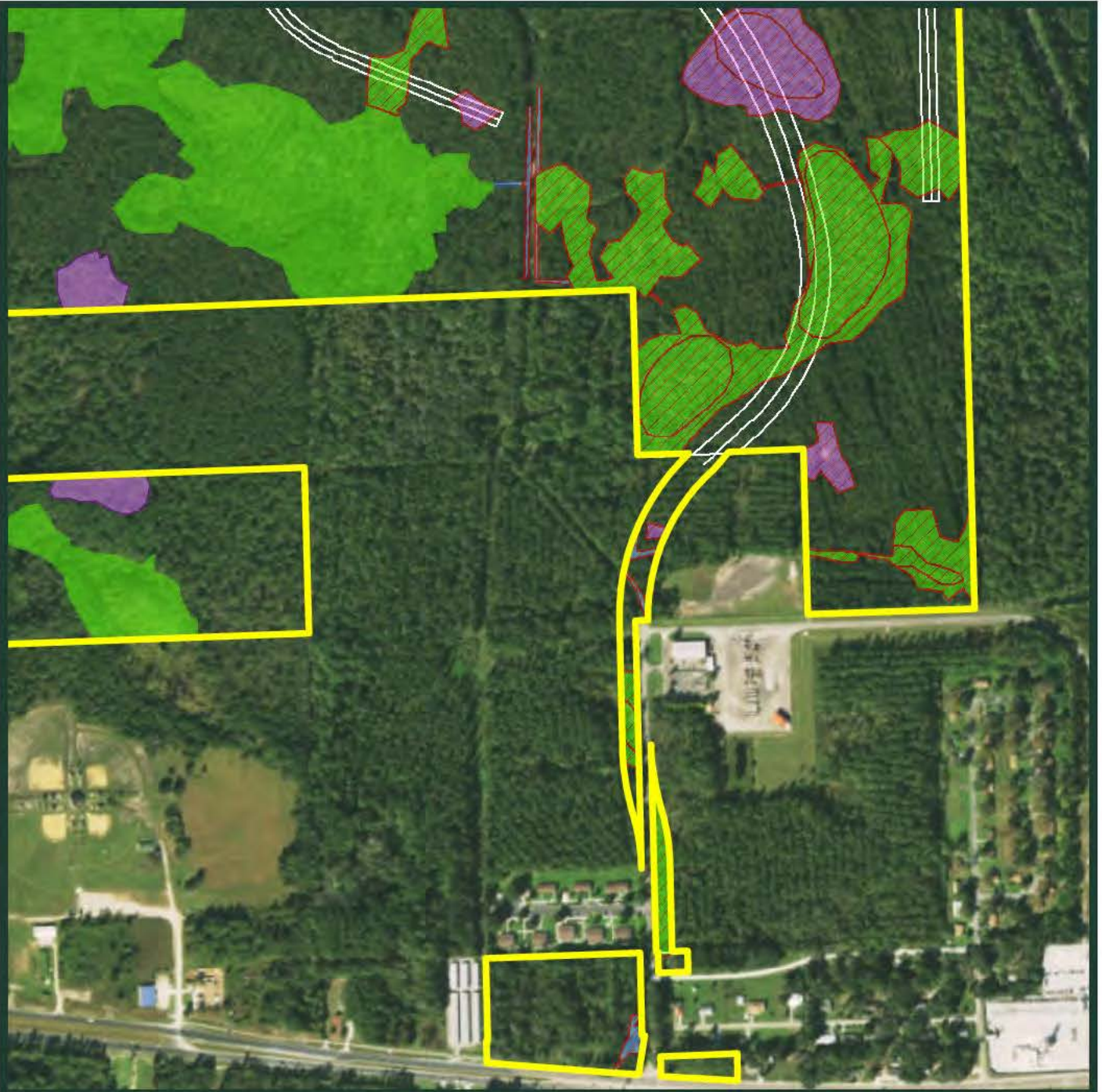


FIGURE 4.4-1. (DETAIL 5) PROPOSED DEVELOPMENT PLAN AND DEPARTMENT OF THE ARMY, CORPS OF ENGINEERS WETLAND IMPACTS FOR THE EA-HAWTHORNE EMPLOYMENT CENTER, CITY OF HAWTHORNE, FLORIDA

BDA BREEDLOVE, DENNIS & ASSOCIATES, INC.
Environmental Consultants
330 W. Canton Ave., Winter Park, FL 32789 • 407-677-1882

See Detail 3

See Detail 5



Legend

- Project Boundary
- Jurisdictional Surface Water
- Jurisdictional Wetlands
- Non-Jurisdictional Wetlands
- Jurisdictional Surface Water Impacts
- Jurisdictional Wetland Impacts
- Non-Jurisdictional Wetland Impacts

Source: Surveyed boundary and wetlands provided by CHW- NC 5/17/16. Wetlands reviewed and approved by SJRWMD under FWD 001-144680-1 and 8/26/16 site review. ArcGIS Online World Imagery, © ESRI, 11/12/2015.

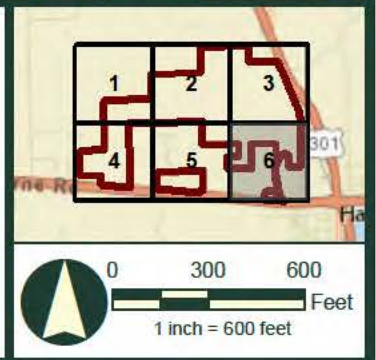


FIGURE 4.4-1. (DETAIL 6) PROPOSED DEVELOPMENT PLAN AND DEPARTMENT OF THE ARMY, CORPS OF ENGINEERS WETLAND IMPACTS FOR THE EA-HAWTHORNE EMPLOYMENT CENTER, CITY OF HAWTHORNE, FLORIDA

BDA BREEDLOVE, DENNIS & ASSOCIATES, INC.
 Environmental Consultants
 330 W. Canton Ave., Winter Park, FL 32789 • 407-677-1882